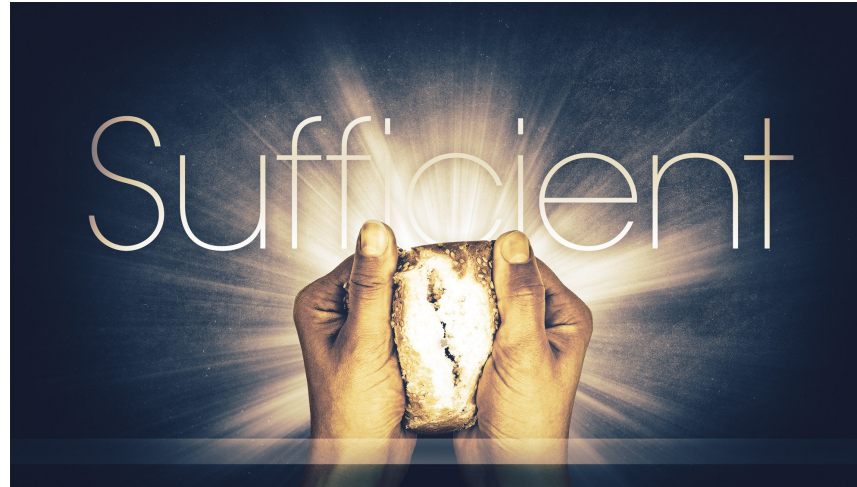


my notes

SEPTEMBER 10, 2017 // 10:30AM



Contact G.S.C.C.

Lead Pastor Rev. Adam Nickell pastora@gentleshepherd.ca 519.794.4429

Family Ministries Pastor Paul Lucas paul@gentleshepherd.ca 226.974.1677

Administrative Assistant Stacey Wight office@gentleshepherd.ca

Supporting Clergy: Rev. Derwyn Docken, Rev. Ann Gillies, Rev. Shirley Ferris and Rev. David McIntyre

Pastor Emeritus: Rev. Don Prince

Council of Elders—Chair: Ruth Johnston rujo64@yahoo.com

Council of Elders—Vice Chair: Pip Lucas

Mailing Address: RR#4, Box 21 Flesherton, ON N0C 1E0

Physical Address: Fire #426176, Concession 8 (North of Grey Road 4, East of Grey Road 13)

GPS Coordinates: 44.303182,-80.518479

Office Hours: Wednesday, Thursday, Friday 10:30am-5pm

Phone: 519.924.3422 **Website:** GentleShepherd.ca



gentleshepherd
community church

Welcome & Announcements
Pastor Adam

Call to Worship & Prayer of Approach
Elder Joel Dawson // Psalm 149:1-5

Worship in Song
Joel Dawson & Team

Scripture Reading
John 6:25-21 // Jim Dawson

Morning Message
I am the Bread of Life // Pastor Adam

Sending Hymn
In Christ Alone

7 day strategy

Monday September 11
Prayer Mtg. (10am), Ignite—Jr. Yth. (7pm)

Tuesday September 12
Pastor Adam @ Markdale Hospital Chaplaincy Rounds (10am)

Wednesday September 13
Men's Breakfast @ The Restaurant (8am), Grey Gables Service (10am), Relentless - Sr. Yth. (7pm)

Thursday September 14
Early Learning Years (9am), Ladies Prayer Gathering @ Doreen Green's (9:30am), Staff Mtg. (1:30pm)

Friday September 15
Pastor Adam's Day Off, Pastor Paul's Day Off

Saturday September 16

Sunday September 17
Weekly Prayer Meeting (9:45am), Worship (10:30am), Sufficient Sermon Series continues, Plan to Protect Mtg. (12pm), Old Durham Rd. Cemetery Service (2pm)



watch n'pray

- > For the devastation, loss, human suffering and trauma taking place in the wake of Hurricane Irma. Pray for the families who have lost loved ones and for the tremendous and overwhelming task of recovery and rebuilding ahead.
- > For South West Mexico as it recovers from a massive earthquake this past Friday. Many have died.
- > For the human suffering and trauma as a result of Hurricane Harvey in Texas and Louisiana. Over 1 million people have been displaced there.
- > For those continuing to be displaced by the wild fires in BC and for those fighting the fires.
- > For the widespread flooding in Windsor Ontario and for Pastor Don as he ministers there as a Chaplain with the Billy Graham Rapid Response Team over the next 2 weeks.
- > Prayers for Shirley Ferris who had a fall off of a ladder and has broken her right wrist and left leg (Tibia). Shirley is not able to be mobile right now and is resting at home.
- > Ruth Brown continues to rest in Markdale Hospital after suffering a stroke and Lord willing will be moving into a long term care home in the near future.
- > Prayers for Iona Shier. For strength to deal with osteoarthritis and for healing through hip replacement surgery on October 6 in Newmarket.
- > Please pray for Antoon VanMaren (Anja's father) who has been diagnosed with an inoperable cancerous brain tumor. The family covets your prayers at this time. Please pray for effective treatment for Antoon.
- > For those battling cancer: Roger and Doreen Bourgeois, Cindy Hargrave, Cathy McPhee, Betty Mills, Jenn Schnier, Diana Stephens, Dorothy Fachnie (Harold Smith's sister), Don Tracey, Ruth Kentner (Dianne Carlson's friend).
- > Ongoing prayer for Les Burnham, Shirley Clark, Ruth Colgan, Jan Dawson, Pete Olver, Piper Sicard, Peter Symons, Joan White, Leone Wight.
- > Grey Gables Residents: Don Bullock and Tom Walton.

please pray for our mission partners

- > Bobby & Sandy Jank (New Tribes Mission Venezuela)
- > "G" (SIM Ethiopia)
- > Ken & Nancy (North Africa)
- > David Sangnay, Suwit Duangkaew, G. Nawdin (Frontier Labourers for Christ - Thailand/ Myanmar)
- > Margaret Thomas Indonesia—OMF (Prayer Partner)
- > Prayers for Cheryl and Donna Pridham, missionaries at the Widow's School in Samaru-Kataf, Nigeria (Prayer Partner)
- > Rev. Bitrus and Monica Audu, Christ Missionary Outreach, Nigeria (Prayer Partner)
- > Adam (North Africa)

for the fridge door

- > "Ignition" (Jr. Youth, Grades 5-8) starts tomorrow Monday September 11, 7pm-8:30pm. "Relentless" (Sr. Youth, Grades 9-12) continues this Wednesday September 6 here at GSCC—Eugenia, 7pm.
- > GriefShare is a 12 week grief recovery seminar and support group that will begin this Tuesday September 12 from 7pm-8:30pm at Gentle Shepherd Community Church in Eugenia. Seminar sessions include "Is This Normal?" "The Challenges of Grief," "Grief and Your Relationships," "Why?" and "Guilt and Anger." GriefShare will be facilitated by John and Shirley Ferris. For more information or to RSVP, please contact the GSCC office.
- > Choir practice begins this Thursday September 14 at 7pm. New choir members are always welcome!
- > The Perspectives on World Missions course this fall held at Heritage College and Seminary. It will start Tuesday September 12th at 7:00 pm for 12 weeks.
- > Plan To Protect annual training session is next Sunday, September 17 following worship and a light lunch. If you volunteer with our children's and/or youth ministry, please attend this session.
- > New Church Directory Photos needed—please submit your photo soon.
- > The Old Durham Road Pioneer Cemetery Annual Decoration Ceremony is on Sunday September 17 at 2pm. Please bring your lawn chairs. Rain location is at St. John's United in Flesherton. Refreshments to follow service.
- > Hebrews Bible Study with Pastor Adam starts on Wednesday September 20 in the Fellowship Hall from 1:30pm-3pm.
- > "Selfless", a camping retreat for Jr. High students in Stayner, will be held on September 22-24. Please speak with Pastor Paul for further info or visit www.JrPitch.com
- > Come and celebrate with us some of the history of South East Grey in honour of Canada's 150th birthday! On Sat. Sept. 30, 2017 we will be hosting a Heritage Tour of Local Cemeteries with historian and tour guide Janet Iles. \$35.00 per person includes the bus tour, catered lunch by Linda Leith and the educational tour guide. Tickets are available at Jolley's Dairy Bar & Video, Flesherton Home Hardware, The Bakery in Flesherton, Grey Highlands Public Library—Flesherton & Markdale Branches, GSCC Office and GentleShepherd.ca.
- > Food Bank Report: For August 55 boxes were prepared for 36 families. A family has requested help to find rental accommodation, budgeted \$800 inclusive, Call Marian 519-599-3576. Also requested are double sheets, pillows and pillow cases, laundry basket, window air conditioner. Donations of school supplies would be appreciated. Needs: baby food, fresh garden produce, any non-perishable. Next food bank dates are Tuesday Sept. 12 and 26.
- > Save the date! On October 28 we will be hosting "Family of Faith", a full day family conference here at Gentle Shepherd. More info to follow.